

 **imageFORMULA**
ScanFront 300/300P
NETWORK SCANNER

Canon
Delighting You Always



Speedily Get Your Scans to the Network

Incorporating the finest features available for network document scanners, the ScanFront 300/300P collects high scanning speeds, image-processing and distribution functions, and the simple-to-use ScanFront Administration Tool in a small but sturdy device.

Business **Can** be simple

Find out more at www.canon-asia.com

Impeccable scanning speed and quality, made simple and secure.

Document scanners from Canon continue to lead the way with innovative technology that effectively scans and shares documents for keeping your business up with the ever-increasing speed of commerce. Canon's latest ScanFront 300/300P is an A4-size color duplex network scanner that boasts impressive scanning speeds, a list of image processing and network sending functions, and ScanFront Administration Tool for managing multiple devices. Two distinct devices, ScanFront 300 is the Standard version to ScanFront 300P's Professional version, which has enhanced scanning speeds, Ultrasonic Double Feed Detection, and Fingerprint Authentication.



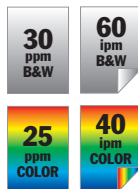
ScanFront 300

Workflow-improving features

High speed scanning

ScanFront 300/300P obtains exceptional scanning speeds, even with full-color documents, using parallel data transfer with a 1-line CMOS sensor and a new advanced CPU for faster processing.

ScanFront 300P, A4/LTR, 200dpi



Compact and robust

The ultra-compact body size of ScanFront 300/300P allows for easy placement in limited spaces, while its robust design is sturdy and strong. Rigid trays for both feeding and output fold inward to protect the screen when not in use.

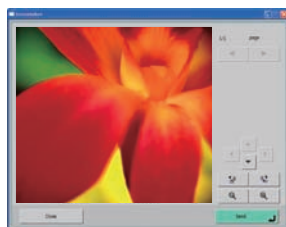
Four USB ports

Four convenient USB ports provide suitable places to affix keyboards, a mouse, or USB memory. One port placed at the front right of the body ideally simplifies Scan To USB Memory execution.



Easy operation

Excellent visibility with the wide 8.4-inch SVGA (800x600) high-definition touch screen allows you to have a better view of control keys and post-scan documents.



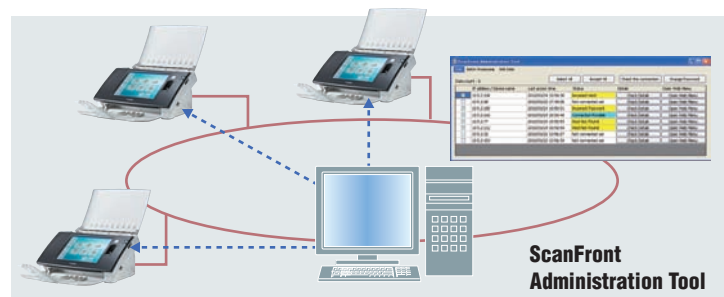
Enhanced scanning functions

In addition to the impressive line-up of image processing functions available with earlier models, ScanFront 300/300P adds such convenient functions as Auto Color Detection, Folio mode, and Long Document Scanning mode.

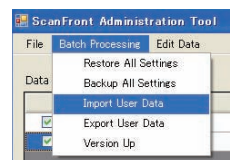
Improve your network capabilities

ScanFront Administration Tool

One window on your PC now provides the integrated device management capability for an administrator to maintain multiple scanners. From ScanFront Administration Tool, you have the ability to register, backup, or restore devices to be managed, as well as change passwords, monitor connection status and access history, check details, and manage registered users of several machines simultaneously.



With ScanFront Administration Tool, an administrator can manage more than one ScanFront 300/300P and execute the following batch processes to several at the same time:

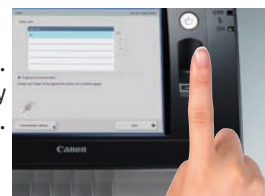


- Restore all device settings from backup data
- Create backup data of all device settings
- Add user accounts from backup data
- Create backup data of user accounts
- Upgrade software

Fingerprint Authentication*

Not even an activation button has to be pressed. If you have a User account on the device, simply sweep your finger over the sensor to gain access. Up to 100 users can be registered to a device.

*ScanFront 300P only.



Index file creation

ScanFront 300/300P can create and send a customised index file at the same time as image file creation and distribution when sending with the Scan To Folder or Scan To FTP functions. This index can simplify file sorting and retrieval.

Network sending functions

Expanding the options for distributing throughout your network, a few simple steps are all it takes for ScanFront 300/300P to scan and share documents to PC folders, e-mail addresses, FTP servers, USB memory, and now even printers and faxes.



- **Scan To Mail**
Send scanned images to a designated e-mail address, with a customisable subjectline and message.
- **Scan To FTP**
Send scanned images to a specific folder on an FTP server.
- **Scan To Fax**
Send scanned documents to FAX service providers via e-mail.
- **Scan To Printer**
Scan and print directly to printers connected to and shared by your server.
- **Scan To USB Memory**
Send scanned images to USB memory inserted to a USB slot.
- **Scan To Folder**
Send scanned images to a shared folder on the network, including network-attached storage systems.

SCANFRONT SDK COMING SOON*

ScanFront 300/300P will support two types of SDK for customising the embedded software. **Add-in SDK** allows you to develop unique processes at specific times in the standard operation sequence of the software. **UI Customisation Tool** can change the background and button images on the menu, Home, or Job screens for a different look and feel to your UI.

**ScanFront SDK will be available 2010 or later.*



ScanFront 300



ScanFront 300P

ScanFront 300/300P Specifications



Type	Sheetfed type network scanner
Document feeding	Automatic sheet feeding
Document size	Width: 50.8 - 216 mm (2 - 8.5 in.) Length: 53.9 - 355.6 mm (2.1 - 14 in.)
Document thickness and weight	Continuous Feeding: 14 - 57 lb bond (52 - 209 g/m ²)(0.06 - 0.25 mm) Manual Feeding: 11 - 57 lb bond (40 - 209 g/m ²)(0.05 - 0.25 mm)
Card size and thickness	Size: 53.9 x 85.5 mm (2.12 x 3.37 in.) Thickness: no more than 0.76 mm (0.03 in.), cards with embossed letters are supported
Feeding capacity	Up to 50 sheets of good quality paper or up to 4.8 mm (0.19 in.) high (maximum)
Scanning element	1-line CMOS CIS
Light source	LED (red, green and blue)
Scanning side	Simplex/Duplex
Scanning modes	Black and White, Error Diffusion, Advanced Text Enhancement II 256-level Grayscale 24-bit Color
Scanning resolutions	100 x 100 dpi, 150 x 150 dpi, 200 x 200 dpi, 300 x 300 dpi, 400 x 400 dpi, 600 x 600 dpi
Scanning speed	B&W ScanFront 300: 30 ppm (Simplex), 60 ipm (Duplex); ScanFront 300P: 30 ppm (Simplex), 60 ipm (Duplex)
(A4/LTR, Vertical, 200 dpi)	Grayscale ScanFront 300: 30 ppm (Simplex), 56 ipm (Duplex); ScanFront 300P: 30 ppm (Simplex), 60 ipm (Duplex)
	Color ScanFront 300: 25 ppm (Simplex), 25 ipm (Duplex); ScanFront 300P: 25 ppm (Simplex), 40 ipm (Duplex)
Useful functions	Ultrasonic Double Feed Detection (ScanFront 300P only), Automatic Page Size Detection, Deskew, Skip Blank Page, Color Dropout/Enhance Color, Text Orientation Recognition, Remove Bleed-Through, Folio, Automatic Color Detection, Long Document Scanning
Operation panel	8.4 inch TFT Liquid Crystal Display with Touch Panel
Fingerprint sensor	Optical Sweep Type Sensor (ScanFront 300P only)
Interface	Hi-Speed USB 2.0 x 4, LAN 10BaseT/100BaseTX connector (with LED to show connection)
Power requirements	AC200 - 240V (50/60Hz)
Power consumption	29W (Scanning), 1W (Sleep mode)
Operating environment	10 - 32.5°C (50 - 90.5°F), Humidity: 20 - 80% RH
Dimensions (W x D x H)	Feed trays closed: 310 x 220 x 161mm (12.2 x 8.6 x 6.3 in.)
Weight	Approx. 3.6 kg, excluding AC adapter
Options/Consumables	Exchange Roller Kit

Specifications are subject to change without notice.

■ Improved maintenance

The body cover of ScanFront 300/300P opens wide for easy recovery actions, such as when removing paper jams, and easy maintenance. An Exchange Roller Kit (sold separately) is available for replacing worn rollers and can be installed yourself – no service technician is needed.

■ Energy efficiency

This device meets the ENERGY STAR Program guidelines for energy efficiency, meaning it requires less energy and cost to run.



ENERGY STAR and the ENERGY STAR mark are registered U.S. trademarks.

Other company names and product names appearing in this brochure are the registered trademarks and/or trademarks of their respective owners.

Canon

Delighting You Always

DEALER'S STAMP

Canon's Sales Subsidiaries & Business Partners

BANGLADESH

Flora Limited
Adamjee Court Annex-2, 4th Fl.
119-120, Motijheel Commercial Area
Dhaka-1000, Bangladesh
Tel: 9567846, 7162742-46 Ext-225
Fax: 880-2-9550030
www.floralimited.com

J.A.N. Associates Ltd
13/1, Fatema Arcade (2nd Floor)
Road 5, Dhanmondi
Dhaka-1205, Bangladesh
Tel: (880) 2 8611444 / 9660601 / 9664101 / 8124941
Fax: (880) 2 8610410
jan@bangla.net
jan-mkt@global-bd.net

BRUNEI

Interhouse Company
P.O. Box 423, Seri Complex BA1779,
Bandar Seri Begawan BF1320
No. 5-7, Bunut Jaya Complex
Spg. 574, Km 7 1/4, Jalan Tutong
Negara Brunei Darussalam
Tel: (673) 2 653001
Fax: (673) 2 653003
www.ihc.com.bn

CAMBODIA

Royal Cambodia Co Ltd
#437 Preah Monivong Blvd
Phnom Penh
Kingdom of Cambodia
Tel: (855) 23 428 955
Fax: (855) 23 722 961
www.royalgroup.com.kh
rcccanon@royalgroup.com.kh

INDIA

Canon India Pvt Ltd.
2nd Floor, Tower A & B
Cyber Greens, DLF Phase III
Gurgaon - 122002 Haryana, India
Tel: (91) 124 416 0000
Fax: (91) 124 416 0011
www.canon.co.in

INDONESIA

P. T. Datascrip
Kawasan Niaga Selatan Blok B-15
Bandar Kemayoran
Jakarta 10610 Indonesia
Tel: (62) 21 6544515
Fax: (62) 21 6544811 to 13
www.datascrip.com

MALAYSIA

Canon Marketing (Malaysia) Sdn Bhd
Block D, Peremba Square,
Saujana Resort Section U2,
40150 Shah Alam,
Selangor Darul Ehsan, Malaysia
Tel: (60) 3 7844 6000 / 7845 0055
Fax: (60) 3 7844 6196 / 6198
www.canon.com.my

MALDIVES

SIMDI Office Automation /
SIMDI Company Pvt Ltd
G.Faith, Majeedhee Magu, 20-139,
Male', Maldives
Tel: (960) 333 4421
Fax: (960) 333 4424
www.simdi.com
ramieze@simdi.com

MYANMAR

Myanmar Golden Rock International Co. Ltd
FJV Commercial Centre
Level 6, No. 422-426
Strand Road Botataung Township
Yangon, Myanmar
Tel: (95) 1 202092 to 96
Fax: (95) 1 202079
sales@mgr.com.mm

NEPAL

International Electronics Concern Pvt Ltd
Kha 14 1st Floor
Haratibhawan Putalisadak,
Ramshah Path, Kathmandu,
P.O. Box 12588
Tel: (977) 1 4421911
Fax: (977) 1 4421909

PAKISTAN

Shirazi Trading Co (Pvt) Ltd
8th Floor, Adamjee House,
I.I. Chundrigar Road,
Karachi, Pakistan
Tel: (92) 21 2417659 / 2417737
Fax: (92) 21 2417747 / 2420417 / 2420418
www.shirazitrading.com.pk

SINGAPORE

Canon Singapore Pte Ltd
1 Harbourfront Avenue #04-01
Keppel Bay Tower
Singapore 098632
Tel: (65) 6799 8888
Fax: (65) 6799 8882
www.canon-asia.com

SRI LANKA

Metropolitan Computers (Pvt.) Ltd
85 Braybrooke, Place Colombo 2,
Sri Lanka
Tel: (94) 1 2437797
Fax: (94) 1 2448980
www.metropolitan.lk

THAILAND

Canon Marketing (Thailand) Co. Ltd
9th-10th Fl., 179/34-45
Bangkok City Tower
South Sathorn Road
Thungmahamek, Sathorn,
Bangkok 10120
Tel: (66) 2 344 9999
Fax: (66) 2 344 9960
www.canon.co.th
info@canon.co.th

VIETNAM

Canon Singapore Pte Ltd
Ho Chi Minh City
Representative Office
Floor 6, SaiGon Centre Building
65 Le Loi, Ben Nghe Ward, District 1
Ho Chi Minh City, Vietnam
Tel: (84) 8 820 0466
Fax: (84) 8 820 0477
www.canon.com.vn
cvro_enq@canon.com.sg

Hanoi City Representative Office
15 Nguyen Chi Thanh
Hanoi, Vietnam
Tel: (84) 4 771 1677
Fax: (84) 4 771 1678
www.canon.com.vn
cvro_enq@canon.com.sg